

# SWO7600

## ECO FUSION PULSE



HSE & CDM COMPLIANT

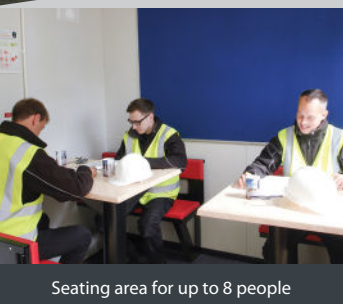
**ECO**  
FUSION PULSE

STATIC

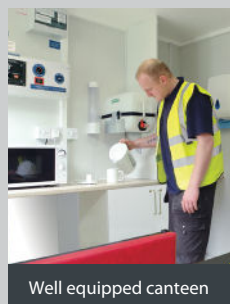
SEATS UP TO  
**8+2 PEOPLE**



Anti-vandal, robust and easy-to-use static welfare accommodation unit.



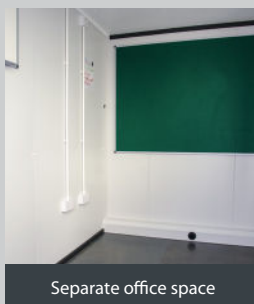
Seating area for up to 8 people



Well equipped canteen



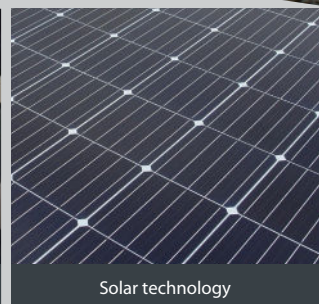
Toilet area



Separate office space



Delivery of hot water



Solar technology

### Innovative, functional, environmentally efficient and cost effective.

The SWO7600 Fusion Pulse static welfare accommodation unit from **groundhog** is incredibly robust and secure with the added feature of a spacious office.

All units meet HSE & CDM requirements and are suitable for accommodating up to ten people, providing a pleasant and safe working environment, **ideal for rental companies and contractors.**

Once lifted into position, they provide a vandal resistant facility and can come with a number of additional money-saving features.

INNOVATION THAT WORKS.

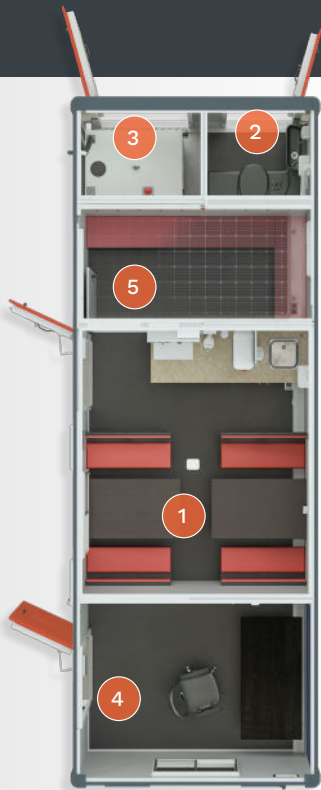
- Powered by roof mounted solar panel with generator back up
- 12V LED lighting with PIR
- 12V diesel powered air blown heating system
- Warm water from an on-board heating system
- Separate drying room
- Inverter powered sockets with USB connectors
- Separate office space for 2 people
- Hard-wired kettle
- Hard-wired microwave

# KEY FEATURES at a glance

Length	<b>7620 mm</b>
Width	<b>2755 mm</b>
Height	<b>2.5 m</b>

Generator	<b>9.8 kVA</b>
Unladen Weight	<b>4500 kg</b>
Possible Gross Weight	<b>4800 kg</b>
Solar Panel	<b>x1</b>

Fresh Water	<b>20 Litres</b>
Waste Water	<b>20 Litres</b>
Toilet Tank Size	<b>280 Litres</b>
Fuel Tank Size	<b>300 Litres</b>



1 Canteen Area
Table and bench seating for up to 8 people
12V LED lighting with PIR
12V air blown heating system
Warm water supplied by a 230V on-board heating system
Large stainless steel sink c/w warm water tap
2 x inverter powered socket and USB connection
1 x 230V double socket & 1 x 230V single socket
12V control panel c/w heater control & battery volt meter
Fresh & waste water containers (20 Ltr cap each)
Carbon monoxide monitor and smoke alarm

2 Toilet Area
Plastic recirculating toilet c/w ventilation pipe
Forearm wash basin c/w warm water tap
12V LED lighting with PIR
12V diesel powered air blown heating system
Warm water supplied by a 230V on-board heating system
Liquid soap & paper towel dispenser

3 Generator Area
9.8kVA super silent diesel generator with 300 litre diesel tank
12V LED lighting with PIR
Generator start battery
Fuel tank runtime = approx. 120 hours

4 Office Area
Office table and chair (optional)
12V LED lighting with PIR
12V air blown heating system
Inverter socket for use of laptops, printers and phone chargers only
230V electrical socket
Notice and wipe clean board

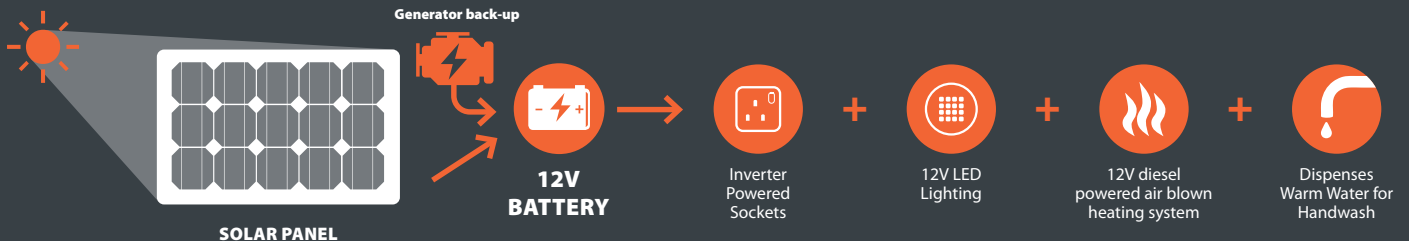
5 Drying Room
12V LED lighting with PIR
12V air blown heating system
Coat hooks
Bench seating
High level window

## The Fusion Pulse System

# INTELLIGENT SOLAR TECHNOLOGY



Highly efficient 130amp power AGM battery is charged via intelligent solar power system built in controller and backed up by an on-board power silenced generator – ensures optimum performance is maintained when in use and unmanned.



# ECO BENEFITS

Engineering a **Zero Carbon Future**. Helping you achieve realistic carbon reduction goals.

<p><b>FUEL COSTS</b> REDUCED UP TO <b>80%</b></p>	<p><b>INCREASED EFFICIENCY</b> with back-up power source</p>	<p><b>LOW NOISE POLLUTION</b></p>	<p><b>0% NOx / SOx</b> when generator is not in use</p>	<p><b>CO2 EMISSIONS</b> REDUCED UP TO <b>80%</b></p>
---	--	-----------------------------------	---	--

Figures are for guidance only. For your own specific savings, contact us for your bespoke value proposition.



For more information on the **Vinco Sales Ltd** SWO7600 Fusion Pulse or to discuss your requirements please visit our website to find your local branch.

**[vincosales.co.uk](http://vincosales.co.uk)**

**Vinco Sales Ltd**

The Kivernoll Building  
Much Dewchurch  
Hereford  
Herefordshire  
HR2 8DU

**01981 540 899**

[info@vincosales.co.uk](mailto:info@vincosales.co.uk)

**PORTABLE BUILDINGS, CONTAINERS & WELFARE SOLUTIONS**



Manufactured by Groundhog.

Reduction savings shown are based on a correctly serviced operational unit.  
Groundhog reserve the right to change specification without prior notice.

Version 1.0 12/24

Copyright ©2024 Groundhog UK Limited. All rights reserved.

No part of this material may be reproduced in any form by any means without the express written permission of Groundhog UK Limited.